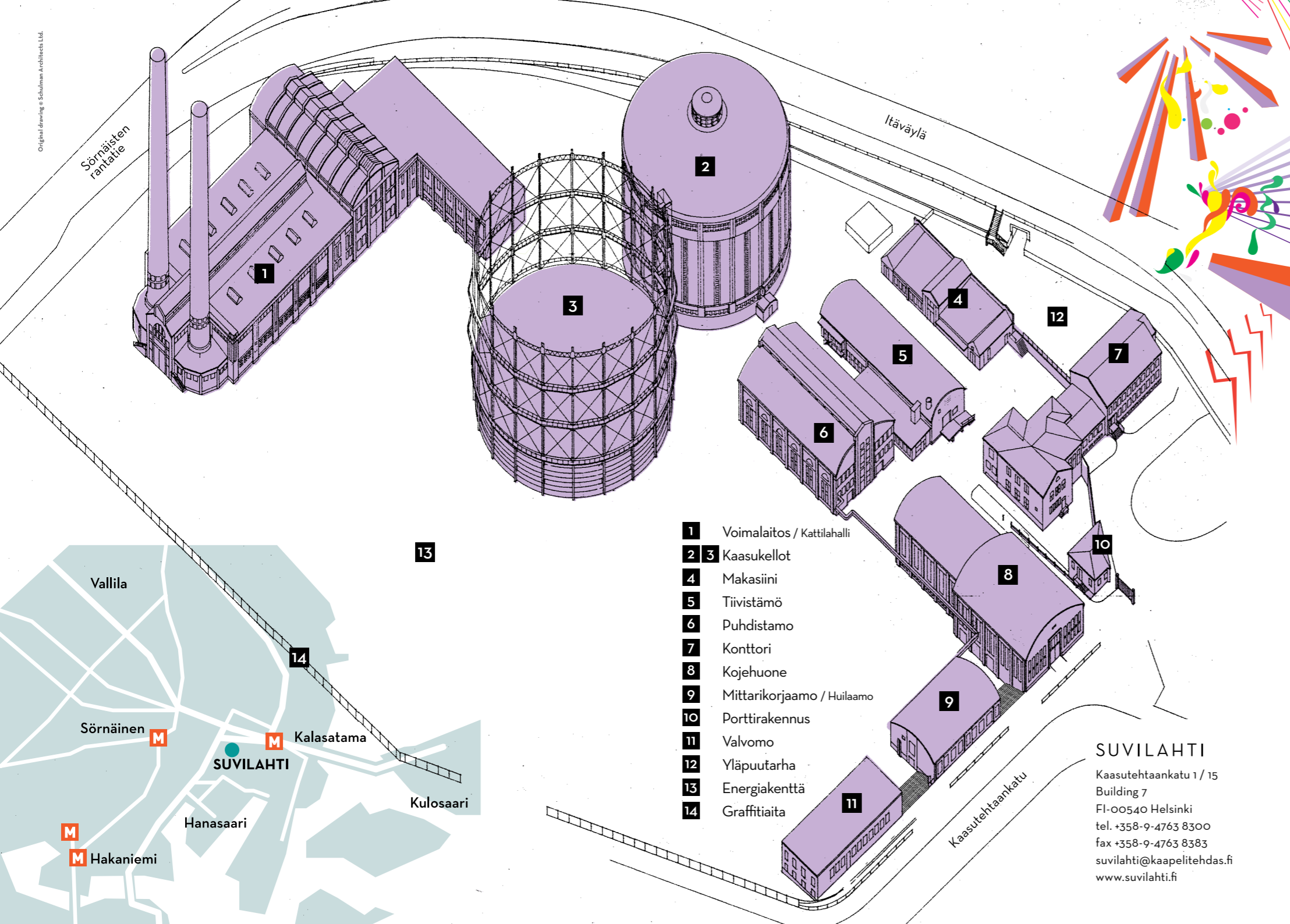




SUVILAHTI 100





SUVILAHTI NOW GENERATES CULTURE

For over a century Suvilahti generated energy for Helsinki residents. Now the form of energy has changed from electricity and gas to culture.

- 1 Voimalaitos / Kattilahalli
- 2 3 Kaasukellot
- 4 Makasiini
- 5 Tiivistämö
- 6 Puhdistamo
- 7 Konttori
- 8 Kojehuone
- 9 Mittarikorjaamo / Huilaamo
- 10 Porttirakennus
- 11 Valvomo
- 12 Yläpuutarha
- 13 Energiakenttä
- 14 Graffititaita

SUVILAHTI

Kaasutehtaankatu 1 / 15
Building 7
FI-00540 Helsinki
tel. +358-9-4763 8300 fax +358-9-4763 8383
suvilahti@kaapelitehdas.fi
www.suvilahti.fi



Suvilahti represents a long-term project and will never be officially opened with any inauguration ceremony. Our mission is to maintain this historically unique industrial environment and rent out its facilities. This work will proceed one building at a time for at least the next ten years. Buildings awaiting repairs will be made available for a wide range of temporary, limited and short-term uses.

The somewhat chaotic nature of the next few years promises that this will be

an exciting time. The area and its buildings provide a virgin environment in which to break barriers while creating new urban culture.

Already today Suvilahti offers visitors an environment that is worth checking out. The atmosphere in the factory courtyard should be experienced right now, and behind an increasing number of the doors are tenants whose activities can be seen and heard to be generating energy.

FROM ELECTRICITY TO CIRCUS

Suvilahti is a diamond in the rough, a village in the city that is beautiful in its own way.

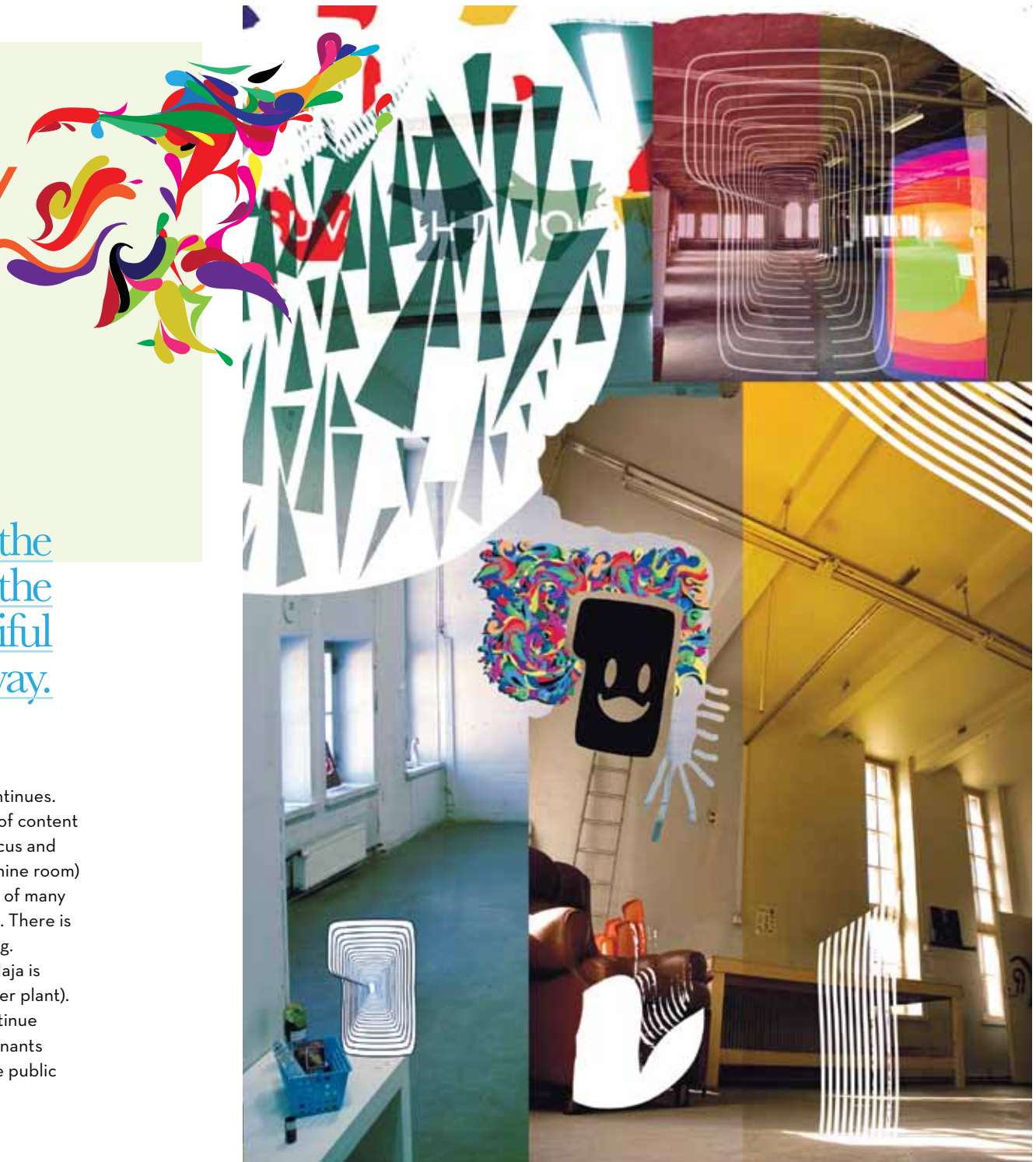
Suvilahti encompasses nine buildings and two large gasometers. Although most of the buildings are still waiting to be renovated, the area is home already to photography studios, artists, writers, event and TV production companies, and advertising agencies.

The administration and operating model for Suvilahti is the same as for the Cable Factory. Work and performance facilities are being refurbished for use by artists and other cultural activities, and the operating concept is being formed

gradually as the repair work continues.

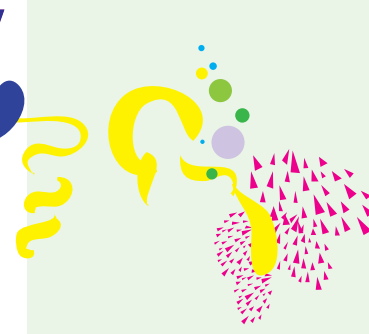
Among the biggest sources of content will be performing arts, new circus and theatre. In the Kojehuone (machine room) is the CIRKO Centre, the home of many circus groups and organisations. There is a restaurant in the same building.

The Estonian centre Eesti Maja is located in the Voimalaitos (power plant). In the near future work will continue on attracting more long-term tenants whose doors will be open to the public throughout the year.





UNUSUAL EVENT VENUE



From the power plant
to the gas sauna via
the energy field

Suvilahti's unparalleled advantages include its diversity, spaciousness, peace and quiet, and excellent transportation connections. Available for rent are two event facilities, a 2.5-hectare event field and two saunas.

Kattilahalli, the former boiler hall, features stunning architecture. The building has enormous cultural historic value and offers an almost church-like space that can be transformed into a venue for art exhibitions or concerts. Tiivistämö, the former condenser room, is a light and spacious area that is ideal for small events. Huilaamo houses Suvilahti's sauna facilities and is perfect

for organising a meeting, sauna evening or a combination of the two. The space includes two saunas, two changing rooms, two lounges, a billiards room and a kitchenette.

Energiakenttä (energy field), is the large courtyard area designed for events. During large events the spaces between the buildings serve as service and access areas, allowing more space for the actual event. The courtyard can also be used for parking. Visitors are welcome to arrive by car, but an even more convenient way to get to Suvilahti is to take the metro to the Kalasatama station.

AN ART NOUVEAU GEM

Helsinki's first major industrial area was built in the waterfront Sörnäinen district in the early 20th century.

Construction of a steam turbine electrical power plant was completed in 1909 and a gas plant the year after. The buildings were designed by architect Selim A. Lindqvist, who was influenced by Viennese Art Nouveau or "Jugend" architecture. The buildings were constructed using the then revolutionary steel-reinforced concrete method. Later changes and expansions were made under the direction of Gunnar Taucher, Lauri Pajamies and Antero Pöyry. Voimalaitos (power plant) represents one of the monuments of Finnish architecture and has been compared to Helsinki's Central Railway Station in terms of significance.

A lively working-class neighbourhood developed around Suvilahti. Local products included bread, soap, bricks,

matches and even elevators. The Suvilahti power plant was closed in 1976 upon completion of the new Hanasaari B power plant. The buildings were converted into warehouses and sports facilities. Already in the 1980s Suvilahti was used to stage production by the KOM Theatre. Gas production was discontinued following the introduction of natural gas in 1994.

Photography studios and other enterprises gradually began moving to the area, and in 2008 the administration of Suvilahti transferred to Kiinteistö Oy Kaapelitalo. Industrial environments and urban culture have always gone together hand-in-hand. Just like a hundred years ago, young people are again flowing into Suvilahti - this time to add their art to the graffiti wall and listen to bands.

